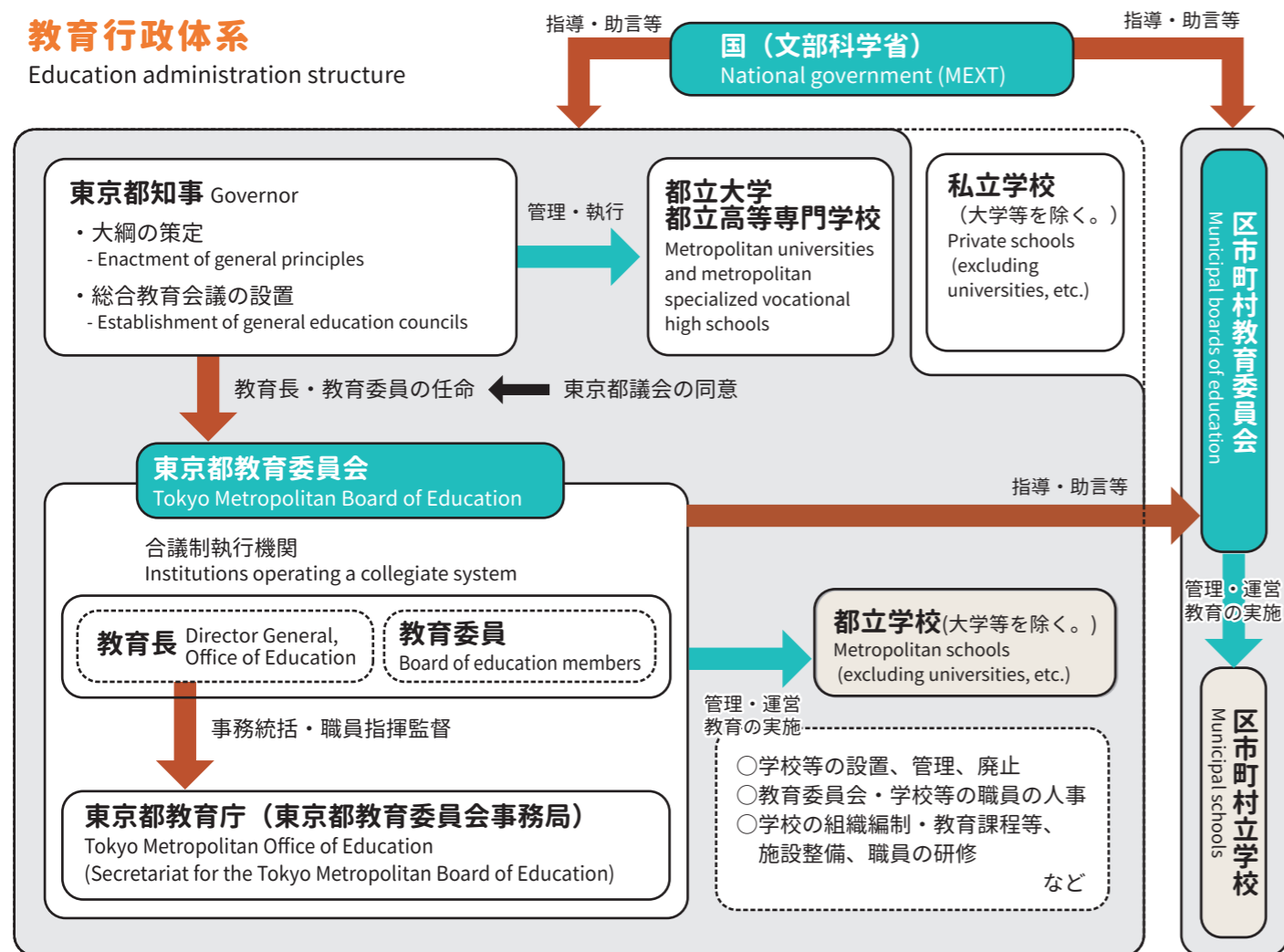


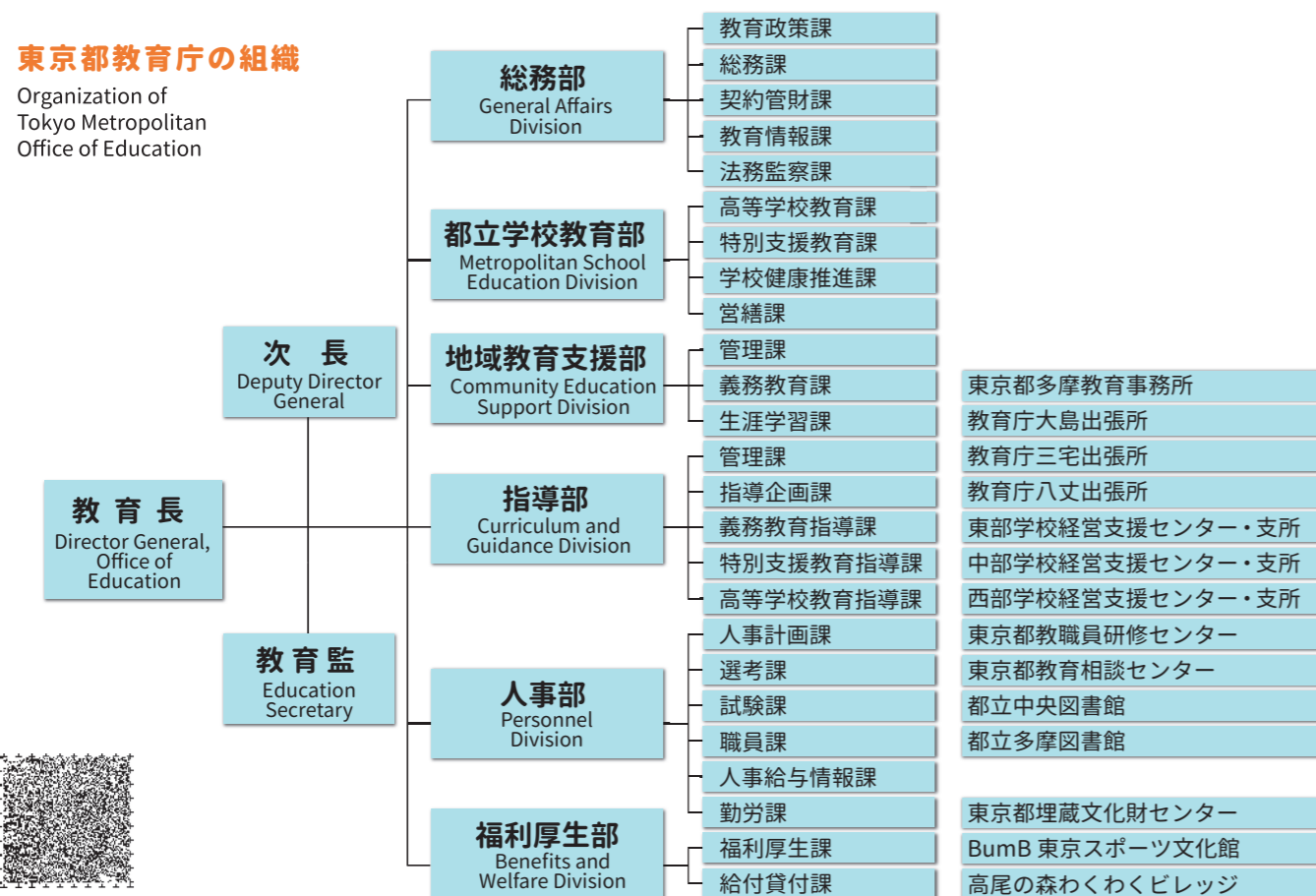
教育行政体系

Education administration structure



東京都教育庁の組織

Organization of Tokyo Metropolitan Office of Education

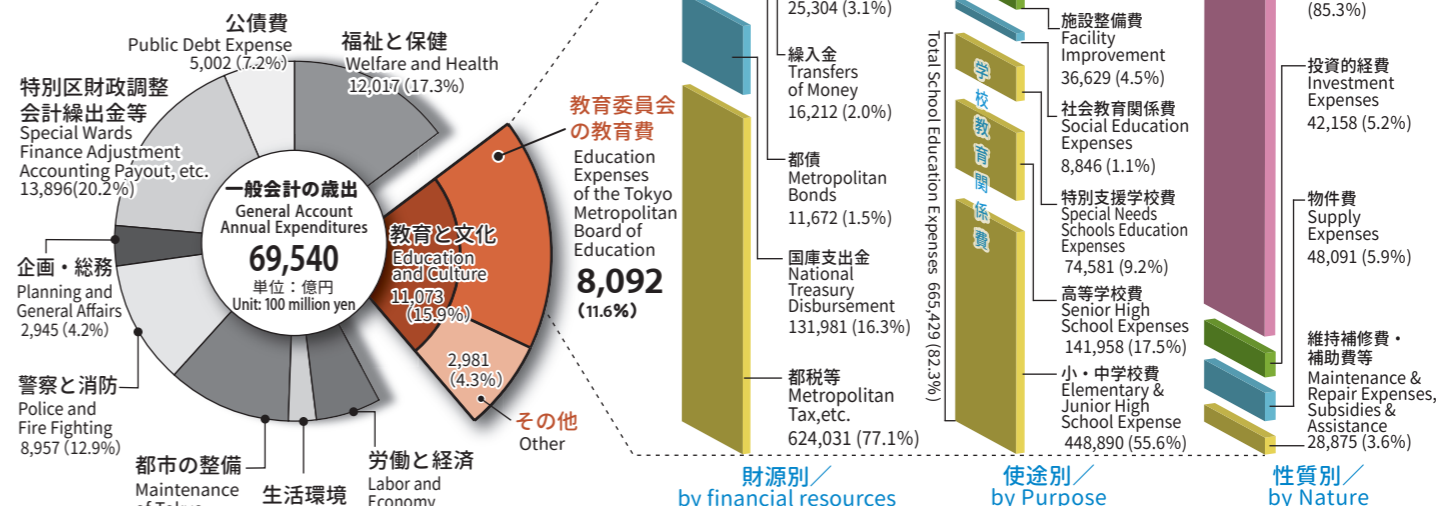


東京都教育委員会の所管に属する平成29年度の教育予算は、8,092億円で、東京都全体の一般会計予算総額6兆9,540億円の11.6%を占めています(平成29年度は、平成29年4月から平成30年3月まで)。

The education budget for Fiscal 2017 amounted to ¥809,200 million. This figure was some 11.6% of the total Tokyo Metropolitan General Accounts of ¥6,954,000 million. (Fiscal 2017 covers the period from April 2017 to March 2018).

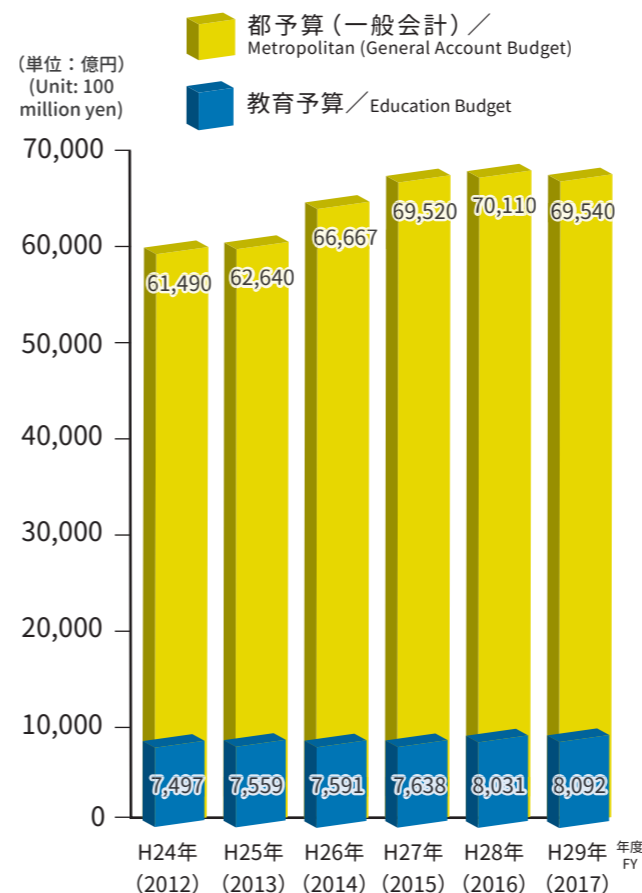
教育予算と都の一般会計(平成29年度)

Education Budget within the Tokyo Metropolitan Government General Accounts (Fiscal 2017)



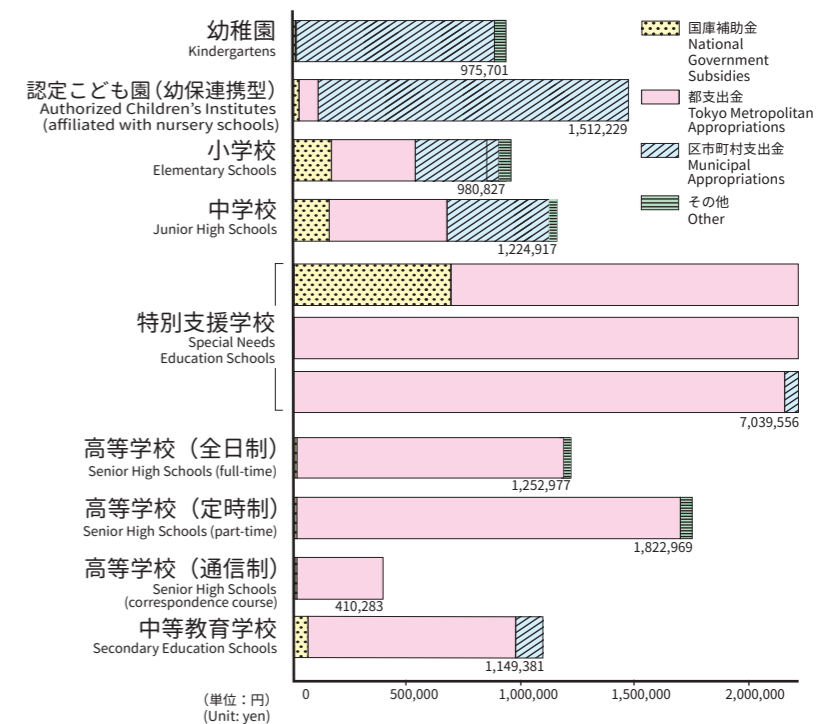
教育予算と都予算の推移(当初予算)

(Initial) Education Budget Trends and Metropolitan (General Account Budget)



児童・生徒一人当たりの教育費(公立学校)

Educational Expenditures per Single Pupil and Student (Public Schools) (Fiscal 2015)



\*その他は、都及び区市町村による地方債の起債等  
\*In addition, municipal bonds are also issued by Tokyo Metropolitan and municipalities, etc.